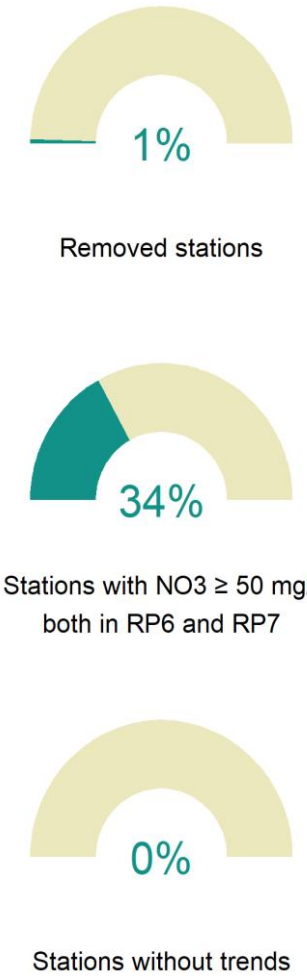
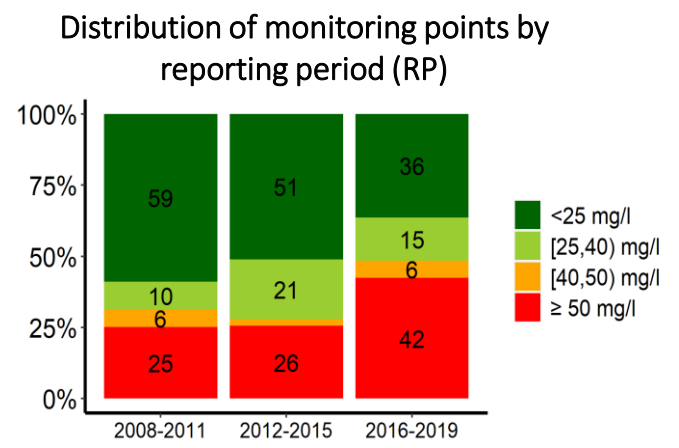
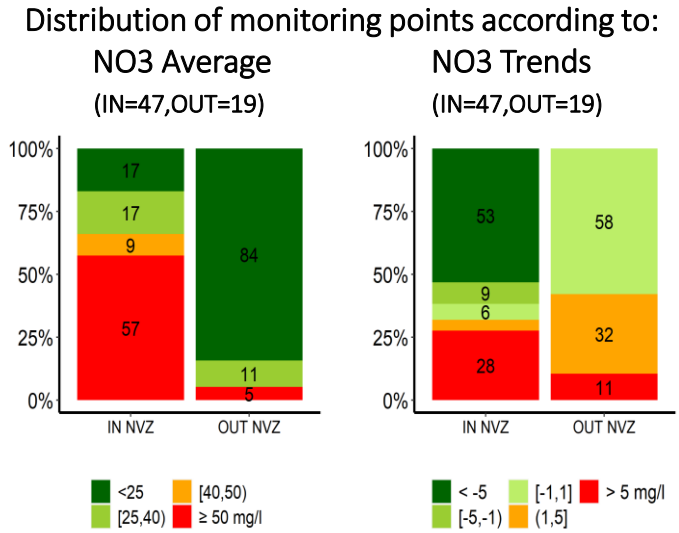
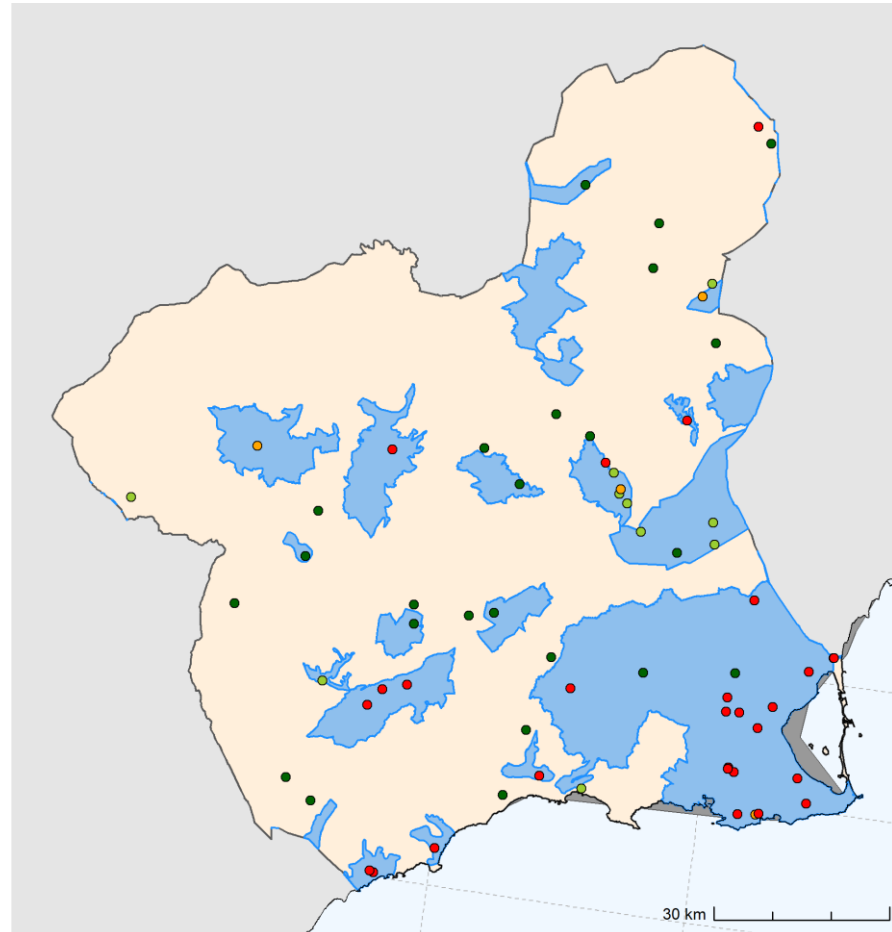
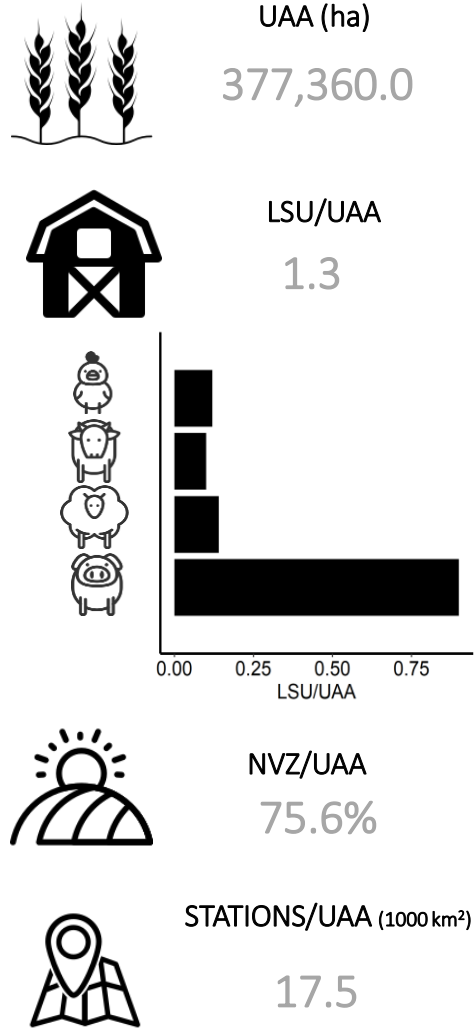


Nitrates Directive Reporting 7: Groundwater

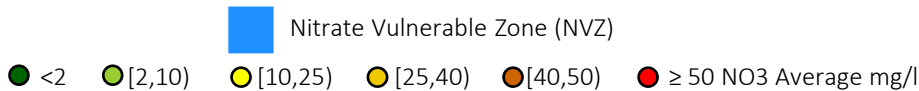
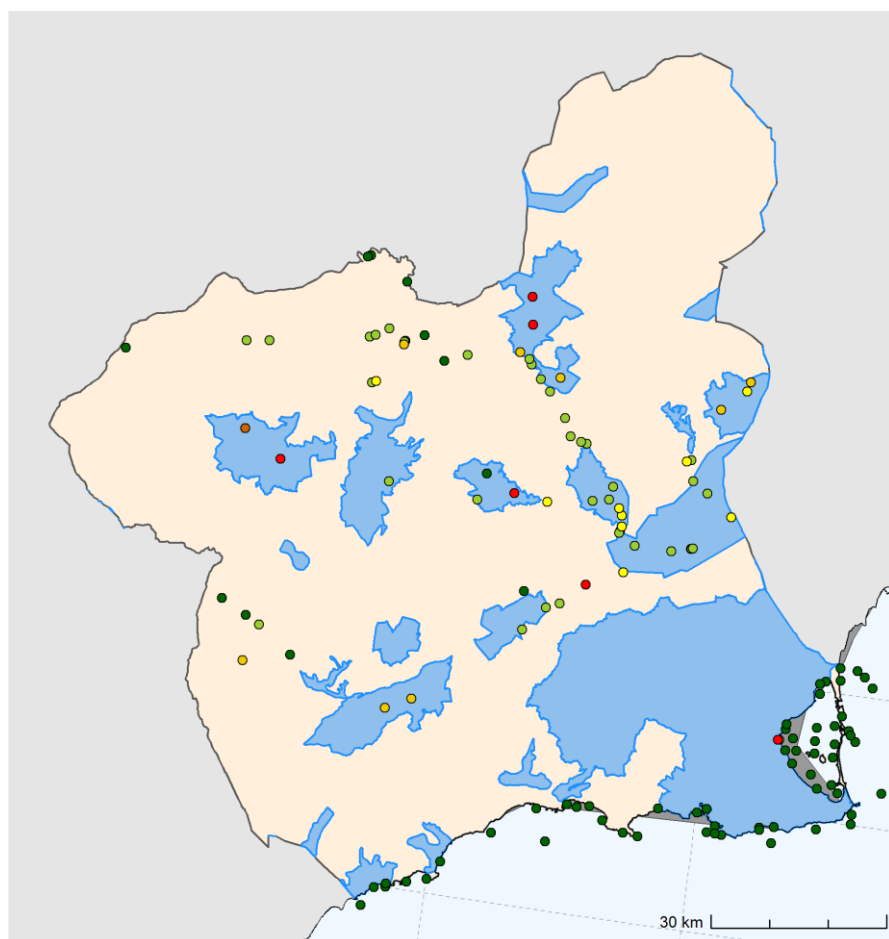
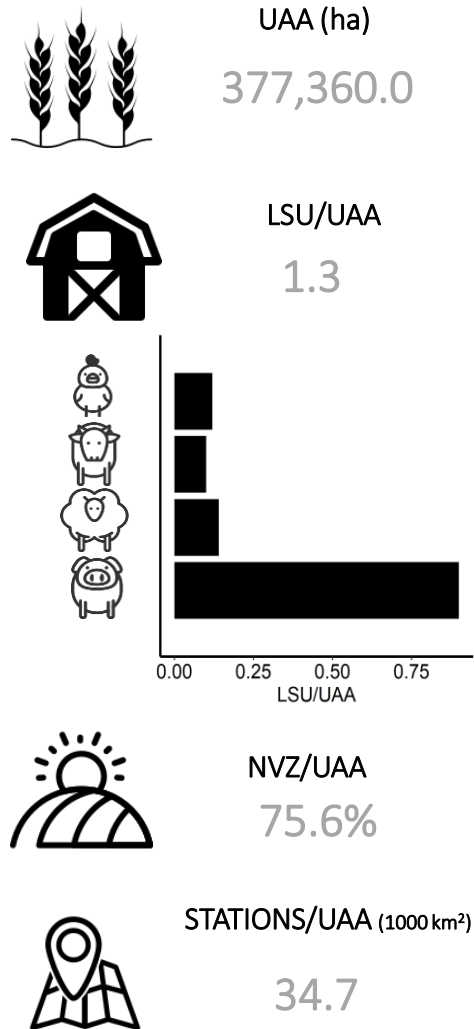


Región de Murcia - ES62

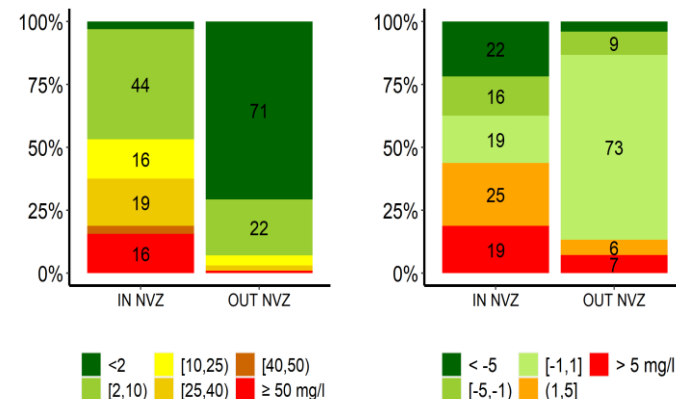




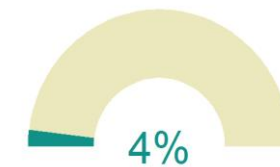
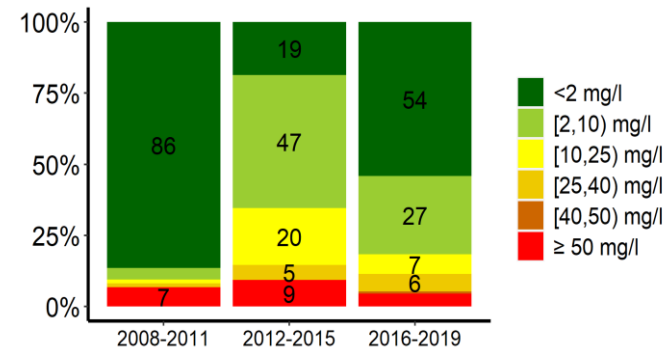
Región de Murcia - ES62



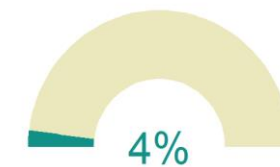
Distribution of monitoring points according to:
NO3 Average (IN=32,OUT=99)
NO3 Trends (IN=32,OUT=98)



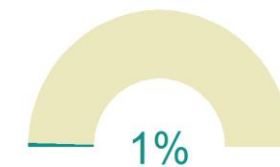
Distribution of monitoring points by reporting period (RP)



Removed stations



Stations with NO3 ≥ 50 mg/l both in RP6 and RP7



Stations without trends



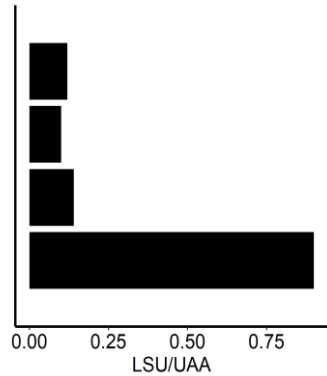
Región de Murcia - ES62



UAA (ha)
377,360.0



LSU/UAA
1.3

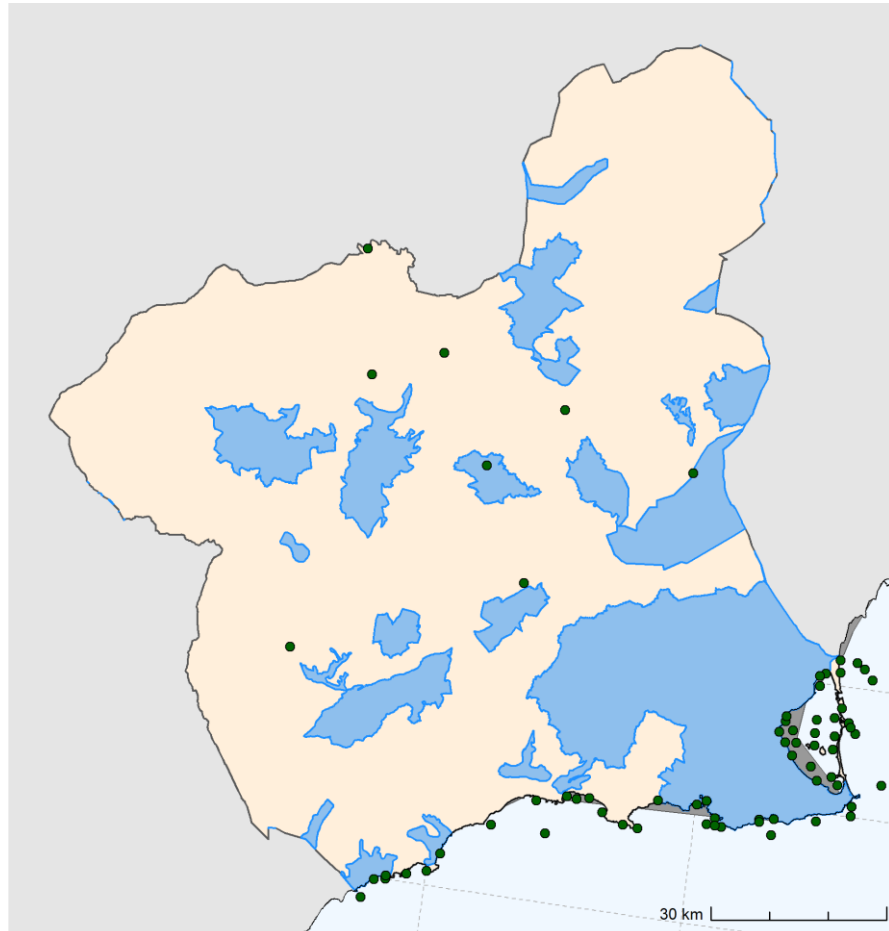


NVZ/UAA
75.6%



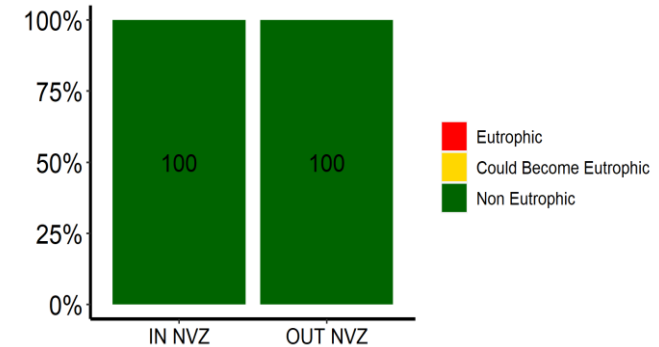
STATIONS*/UAA (1000 km²)
18.0

* With trophic status

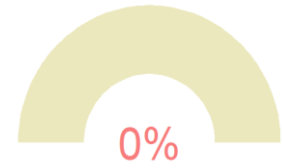


■ Nitrate Vulnerable Zone (NVZ)
● Eutrophic ● Could Become Eutrophic ● Non Eutrophic

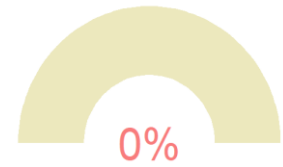
Distribution of monitoring points according to Trophic Status (IN=2,OUT=66)



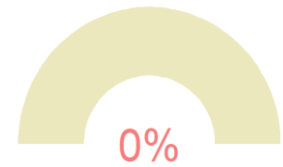
% calculated over all the stations



Eutrophic stations with NO₃ ≤ 10 mg/l



Eutrophic stations with NO₃ ≥ 10 mg/l



Stations with NO₃ ≥ 50 mg/l both in RP6 and RP7 and Eutrophic Status

Distribution of monitoring points by reporting period (RP)

